

90'

Bass Cat



Total Performance Bass Boats

A Family Tradition



Total Performance Bass Boats

A Family Tradition

Since 1971 we have owned and operated Bass Cat boats as a family business and have built a reputation of quality and a tradition of service for our Bass Cat family. You can see the proof of this at our annual "1990 Owners Invitational" which will be held again at Lake Norfolk on March 24th and 25th. It truly is a family reunion. We'll make you feel at home from the registration to the country style BBQ, and final weigh-in. We'll service your boat before you start fishing, and we'll even inspect and fix your trailer, if needed, while you fish on Saturday and Sunday. But that's just to let you know how we feel about our Family.

This is the time when conglomerates are attempting to stuff "Package Boats" down the throats of their consumers, who are just another number to them, these products are built for the average consumer. Bass Cat does not build products for numbers to use or the average consumer, we build our boats for today's fishermen.

When you buy a boat of this type, do yourself a favor and buy from a company which has a successful history. Years in the future you may want the scratches taken out or the carpet replaced or maybe just to keep it in original condition from a successful company, not one which has had financial failures, buyouts, bankruptcies or burnouts. The value of your boat is directly related to this as is the necessity of someone to cover service and warranty items.

Well, enough about that. Our 1990 top-of-the-line boats feature built-in chargers, sealed Euro-style rocker switches, hydraulic lid openers, and fully lighted rod, storage, and battery areas. All pretty nifty on a dark night at the motel. Also, new for 1990 is the Caracal II for the maximum in 150 performance. If a 17' boat fits you, you're bound to like this one with all of the same features of our top-of-the-line Pantera II. All of this has been designed with the help of the entire Bass Cat Family.

All of us at Bass Cat thank you for taking your time to look at our boats. We hope this catalog will help you to understand more about your boating future while making your buying decision easier. We the Pierce family want you to seriously consider joining our Family. This family does not consider you just another number!

Safe Boating & Good Fishin'!

The Pierces





Calico



■ We recommend you always wear a Life Jacket anytime your outboard is running...with an emergency safety switch attached.

A truly sleek ski boat...from the nation's supreme bass boat builder. The high performance handling and ride of a "Cat" is now available for the water ski folks who also like to fish now and then. A few features you'll enjoy are a walk-thru windshield, three storage boxes, an ice chest between two consoles, two bucket seats (the passenger seat swivels) and two rear fold-down seats. And when you just want to cruise...pop in your favorite tape in the Maxima stereo (optional) and test the 100 watt speakers.

STANDARD FEATURES:

- Graphics Dash Panel
- Lockable Storage Boxes
- Metal Flake Cap w/Four Cleats
- Running Lights
- Carpeted Storage Boxes
- Bubble Trim
- VDO Instrument Panel
- Cigarette Lighter
- Two Fishing Seats
- Dual Steering
- Livewell Control Valve
- Livewell Timer
- Sliding Bucket Seats (2)
- 6' Rod & Ski Storage
- Deluxe Steering Wheel
- Built-in Fuel Tank

- Trim Stripe on Hull
- Rod & Ski Strap
- Trim Switch Front & Rear
- Bow Panel w/6 Gauge Wire
- Courtesy Lights
- Premounted Horn
- Color Coded Wiring
- Two Aerated Livewells
- Bilge Pump
- AM/FM Cassette Stereo
- Framed Wind Screens
- Console Tray
- Euro Style Rocker Switches



SPECIFICATIONS:

- Length18'
- Beam90"
- Approx. Weight.1200 Lb.
- Fuel Capacity.33 Gal.
- Maximum H.P. Range . .135-175 H.P.

OPTIONAL EQUIPMENT:

- Funshine Package Includes:
 - Silhouette Package
 - Ski Ladder
 - Ski Tow Bar
 - Maxima Marine 50 Watt AM/FM WB/Cassette Stereo with 100 Watt Speakers and Equalizer.
- Full Top
- Side Curtains
- Aft Curtains



Margay



■ We recommend you always wear a Life Jacket anytime your outboard is running...with an emergency safety switch attached.

The Margay is the perfect mid-size boat for the fisherman desiring a boat with superb performance and handling with motors in the 75 to 120 h.p. range.

Fishermen will find dual rear livewells behind the bench seats a dream to hold a limit of bass.

STANDARD FEATURES:

- Metal Flake Cap & Insert
- Trim Stripe on Hull
- Rope Rub Rail
- Carpeted Rod Box
- Stainless Steel Handrails
- Fused Switches
- Color Coded Wiring
- Aerated Livewells
- Bilge Pump
- 12 Volt Trolling Motor Plug
- Custom Bench & Two Fishing Seats
- Dual Aerated Livewells

TRAILER:

- 2500 Lb. Axle
- 3 Inch Channel Construction
- Waterproof Bearings
- Recessed/Waterproof Lights
- White Spoke Wheels
- 1200 Lb. Winch
- Custom Paint & Carpet



SPECIFICATIONS:

- Length16' 9"
- Beam79"
- Approx. Wt.880 Lb.
- Maximum H.P. Range ...75-120 H.P.

OPTIONAL EQUIPMENT:

- Plexiglas Windscreen
- 21 Gal. Built-in Gas Tank
- Ski Tow Bar
- Pro Butt Seat
- Recirculating Livewell w/Timer
- Rod Straps
- Lowrance Electronics
- Motorguide 730 Trolling Motor
- Flush Mount Controls: OMC, Mercury or Yamaha

Margay II



■ We recommend you always wear a Life Jacket anytime your outboard is running...with an emergency safety switch attached.

STANDARD FEATURES:

- Metal Flake Cap & Insert
- Trim Stripe on Hull
- Rope Rub Rail
- Bubble Trim
- Carpeted Rod Box
- Stainless Steel Handrails
- Custom Bench & Two Fishing Seats
- Euro Style Rocker Switches
- Color Coded Wiring
- Dual Aerated Livewells
- Bilge Pump
- 12/24 Bow Panel w/6 Gauge Wire
- VDO Instrument Panel
- Cigarette Lighter
- Livewell Control Valve
- Trim Switches (F&B)
- Deluxe Steering Wheel
- Two Courtesy Lights
- Premounted Horn
- Livewell Timer
- Trimmed Floor Edging
- Rod Straps
- Lockable/Carpeted Storage
- Center Floor Seat Base
- Built-In 21 Gal. Fuel Tank
- Running Lights
- Graphics Dash Panel

The Margay II is a deluxe version of the popular Margay. More "bells and whistles" for the fisherman who wants a little easier life on the water. Plus, you'll find even more "bells" on the option list in customizing your boat to make it perfect for you!



SPECIFICATIONS:

Length16' 9"
 Beam79"
 Approx. Wt.880 Lb.
 Maximum H.P. Range ...75-120 H.P.

OPTIONAL EQUIPMENT:

- Plexiglas Windscreen
- Metal Flake Hull
- Silhouette Package (Inc. Trailer)
- Ski Tow Bar
- Pro Butt Seat
- Dual Steering
- Recirculating Livewell w/Timer
- Lowrance Electronics
- Motorguide 730, 665 or 765 Trolling Motor
- CMC Jackplate
- Flush Mount Controls: OMC, Mercury or Yamaha



Caracal



■ We recommend you always wear a Life Jacket anytime your outboard is running...with an emergency safety switch attached.

STANDARD FEATURES:

- Metal Flake Cap & Insert
- Trim Stripes on Hull
- Rope Rub Rail
- Bubble Trim
- Carpeted Rod Boxes
- Stainless Steel Handrails
- Custom Seats
- Euro Style Rocker Switches
- Color Coded Wiring
- Dual Aerated Livewells
- Bilge Pumps
- 12/24 Bow Panel w/6 Gauge Wire
- VDO Instrument Panel
- Graphics Dash Panel
- Cigarette Lighter
- Lowrance LID-3000
- Livewell Control Valve
- Trim Switches/Front & Rear
- Deluxe Steering Wheel
- Dual Steering
- Two Courtesy Lights
- Premounted Horn
- Livewell Timer
- Trimmed Floor Edging
- Rod Straps
- Lockable/Carpeted Storage
- Center Floor Seat Base
- Built-In 30 Gal. Fuel Tank
- Running Lights

The Caracal Pro is the ideal entry level boat for the serious fisherman. This seventeen foot boat offers an excellent ride with "all out" performance capabilities. Any serious fisherman will appreciate the more than ample storage space, ice chest, dual rear livewells, and rod box storage with room for a flippin' stick.



SPECIFICATIONS:

Length17'
Beam38.9"
Approx. Weight1000 Lb.
Fuel Capacity30 Gal.
Maximum H.P. Range ...85-150 H.P.

OPTIONAL EQUIPMENT:

- Plexiglas Windscreen
- Silhouette Package (Inc. Trailer)
- Ski Tow Bar
- Ski Ladder
- Pro Butt Seat
- Recirculating Livewell w/Timer
- Lowrance LCR's/Flashers
- Motorguide 665 or 765 Trolling Motor
- CMC Jackplate
- Flush Mount Controls: OMC, Mercury or Yamaha



Caracal II



■ We recommend you always wear a Life Jacket anytime your outboard is running...with an emergency safety switch attached.

New for '90, a deluxe version of our popular Caracal. The Caracal II is the "Hot Rod" of the Bass Cat Boats, it will outperform, percent wise, per H.P., any other boat in our line. Today's serious fisherman will appreciate this performance, but most of all, he will be amazed at the fact that this 17' boat has all the standard features of the Pantera II...our top of the line bass boat.

STANDARD EQUIPMENT:

- Dual Built-In Battery Chargers
- Lighted Storage Boxes
- CMC Jackplate
- Two Lowrance 1240-A's (F&R)
- Dual Bilge Pumps (Auto or Man.)
- Dual Aerators w/Timers
- Graphic Dash Panel
- Deluxe Steering Wheel
- Bubble Trim
- Metal Flake Cap
- Trim Stripe on Hull
- Console Tray w/Lighter
- Four Interior Courtesy Lights
- Livewell Control Valve
- Circuit Breakers
- Carpeted Floor Edging
- Three Seat Positions
- Two 13" Seat Extensions
- Battery Check Gauge
- Front Light Switch
- Euro Style Rocker Switches
- Removable Rear Lids
- Front Accessory Switch
- Dual Rear Livewells
- Front & Rear Cinch Blocks
- VDO Instrument Panel
- Stainless Steel Handrails
- Lockable Storage Boxes
- Hydraulic Lid Openers
- Metal Flake Insert
- Running Lights
- Tackle Box Shelf
- Master Switch
- Indicator Lights
- Horn
- Four Cleats (Flush Mount)
- Two Fishing Seats
- 12/24 Bow Panel w/6 Gauge Wire
- Rear & Front Trim Switches
- Passenger Handrails
- Rod Straps
- Rope Bump Molding
- Dual Tanks
- Dual Steering
- PVC Enclosed Wiring Harnesses
- Color Coded Wiring



SPECIFICATIONS:

Length17'
Beam89"
Approx. Weight1150 Lb.
Fuel Capacity46 Gal.
Maximum H.P. Range ..	.85-150 H.P.

OPTIONAL EQUIPMENT:

- Silhouette Package
- Flush Mount Controls: OMC, Mercury or Yamaha
- Pro Butt Seat
- Lowrance Electronics
- Motorguide 665 or 765
- Ski Ladder & Tow Bar
- Elevated Flipping Deck



Sabre



■ We recommend you always wear a Life Jacket anytime your outboard is running...with an emergency safety switch attached.

The Sabre is Bass Cat's tournament fisherman's dream machine. A boat designed by tournament fishermen for use by the serious fisherman. One demo ride and you'll see how you can get to your "honey hole" before someone else ...get there dry and in comfort. A quick review of the standard features will have even the most serious fishing critic wondering where was this Sabre when he fished his last tournament.

STANDARD EQUIPMENT:

- Dual Built-In Battery Chargers
- Lighted Storage Boxes
- CMC Jackplate
- Two Lowrance 1240-A's (F&R)
- Dual Bilge Pumps (Auto or Man.)
- Dual Aerators w/Timers
- Graphic Dash Panel
- Deluxe Steering Wheel
- Bubble Trim
- Metal Flake Cap
- Trim Stripe on Hull
- Console Tray w/Lighter
- Four Interior Courtesy Lights
- Livewell Control Valve
- Circuit Breakers
- Carpeted Floor Edging
- Three Seat Positions
- Two 13" Seat Extensions
- Battery Check Gauge
- Front Light Switch
- Euro Style Rocker Switches
- Removable Rear Lids
- Front Accessory Switch
- Dual Rear Livewells
- Front & Rear Cinch Blocks
- VDO Instrument Panel
- Stainless Steel Handrails
- Lockable Storage Boxes
- Hydraulic Lid Openers
- Metal Flake Insert
- Running Lights
- Tackle Box Shelf
- Master Switch
- Indicator Lights
- Horn
- Four Cleats (Flush Mount)
- Two Fishing Seats
- 12/24 Bow Panel w/6 Gauge Wire
- Rear & Front Trim Switches
- Passenger Handrails
- Rod Straps
- Rope Bump Molding



- Dual Tanks
- Dual Steering
- PVC Enclosed Wiring Harnesses
- Color Coded Wiring

SPECIFICATIONS:

Length	18'
Beam	90"
Approx. Weight	1225 Lb.
Fuel Capacity	46 Gal.
Maximum H.P. Range	135-175 H.P.

OPTIONAL EQUIPMENT:

- Silhouette Package
- Ski Ladder
- Ski Tow Bar
- Flush Mount Controls: OMC, Mercury or Yamaha
- Pro Butt Seat
- Lowrance Electronics
- Motorguide 665 or 765
- Elevated Flipping Deck



Pantera



Pro



Ski

■ We recommend you always wear a Life Jacket anytime your outboard is running...with an emergency safety switch attached.

The Panthera Pro is Bass Cat's ultimate "Fishing Machine." This 19' boat offers fishermen front and rear decks with plenty of room to play even the biggest "Hawgs." Under the decks you'll find dual livewells, dual rod boxes, dry storage and an ice chest...more than enough room to pack for a day of fun and excitement.

The hull design and overall hand craftsmanship of the Panthera provides the best overall performance of any bass boat on the market...bar none.

SPECIFICATIONS:

Length19'
Beam91.5"
Approx. Weight Pro1250 Lb.
Approx. Weight Ski1350 Lb.
Fuel Capacity30 Gal.
Maximum H.P. Range135-200 H.P.

OPTIONAL EQUIPMENT:

- Plexiglas Windscreen
- Silhouette Package (Inc. Trailer)
- Pro Butt Seat
- Recirculating Livewell w/Timer
- Lowrance LCR's/Flashers
- Motorguide 665 or 765 Trolling Motor
- CMC Jackplate
- Flush Mount Controls: OMC, Mercury or Yamaha
- Ski Ladder
- Ski Tow Bar

PANTERA SKI OPTIONS:

- Canopy Top w/Walk-Thru Windscreen
- Carpeted Rod Box Lids



STANDARD FEATURES:

- Graphics Dash Panel
- Lockable/Carpeted Storage Boxes
- Metal Flake Cap
- Stainless Steel Handrails
- Rod Strap
- Trim Switches Front & Rear
- 12/24 Bow Panel w/6 Gauge Wire
- VDO Instrument Panel
- Cigarette Lighter

- Two Fishing Seats
- Dual Steering
- Center Floor Seat Base
- Deluxe Steering Wheel
- Built-In Fuel Tank
- Trim Stripe on Hull
- Running Lights
- Bubble Trim
- Trimmed Floor Edging

- Two Courtesy Lights
- Premounted Horn
- Color Coded Wiring
- Two Aerated Livewells
- Bilge Pump
- Livewell Timer
- Dual Consoles (Ski)
- Padded Seating on Rod Box Lids (Ski)
- Euro Style Rocker Switches

Pantera



■ We recommend you always wear a Life Jacket anytime your outboard is running...with an emergency safety switch attached.



Pantera II

The Pantera II is the "Rolls Royce" of the Bass Cat line. From the eight stringer hull to the VDO Instrument Panel, the Pantera II is pure perfection in quality craftsmanship. Years of planning and discussions with professional fishermen have produced a boat unsurpassed in the industry. This Pantera's innovative 19' hull was a 1st in the bass boat industry. Today it is probably the most copied size due to its popularity among the ranks of serious fishermen.

Standard features, such as two built-in battery chargers, fully lighted rod and storage boxes, two Lowrance 1240-A's, battery checkers and step-on trim switches are a few features which illustrate the forethought which went into the production of the Pantera II.

The hull design and overall hand craftsmanship of the Pantera II provides the best "rough water," no porpoise, ride of any bass boat on the market...bar none. Compare the performance, handling, rough water ride and quality craftsmanship of the Pantera II to any bass boat...bar none.

The Pantera II DC is a dual console model of the Pantera II. You will find the same exacting attention to detail, features and construction, but with an added console for your passengers' protection from the elements. This dual console model is also preferred by many who utilize their boat for both fishing and water skiing...and some just like the overall appearance of dual consoles better.

The Pantera II and Pantera II DC...one thing for sure, you can't make a bad choice!

STANDARD EQUIPMENT:

- Dual Built-in Battery Chargers
- Lighted Storage Boxes
- CMC Jackplate
- Two Lowrance 1240-A's (F&R)
- Dual Bilge Pumps (Auto or Man)
- Dual Aerators w/Timers
- Graphic Dash Panel
- Deluxe Steering Wheel
- Bubble Trim
- Metal Flake Cap
- Trim Stripe on Hull
- Console Tray w/Lighter
- Four Interior Courtesy Lights
- Livewell Control Valve
- Circuit Breakers
- Carpeted Floor Edging
- Three Seat Positions
- Two 13" Seat Extensions
- Battery Check Gauge
- Front Light Switch
- Euro Style Rocker Switches
- Removable Rear Lids
- Front Accessory Switch

erera II



- Dual Rear Livewells
- Front & Rear Cinch Blocks
- VDO Instrument Panel
- Stainless Steel Handrails
- Lockable Storage Boxes
- Hydraulic Lid Openers
- Metal Flake Insert
- Running Lights
- Tackle Box Shelf
- Master Switch
- Indicator Lights
- Horn
- Four Cleats (Flush Mount)
- Two Fishing Seats
- 12/24 Bow Panel w/6 Gauge Wire
- Rear & Front Trim Switches
- Passenger Handrails
- Rod Straps
- Rope Bump Molding
- Dual Tanks
- Dual Steering
- PVC Enclosed Wiring Harnesses
- Color Coded Wiring

OPTIONAL EQUIPMENT:

- Silhouette Package
- Ski Ladder
- Ski Tow Bar
- Flush Mount Controls: OMC, Mercury or Yamaha
- Pro Butt Seat
- Lowrance Electronics
- Motorguide 665, or 765 Trolling Motor

SPECIFICATIONS:

Length 19'
 Beam 92"
 Approx. Weight 1350 Lb.
 Approx. Weight DC 1450 Lb.
 Fuel Capacity 50 Gal.
 Maximum H.P. Range . . 135-200 H.P.



Pantera II DC



**Caracal II
Sabre
Pantera II**

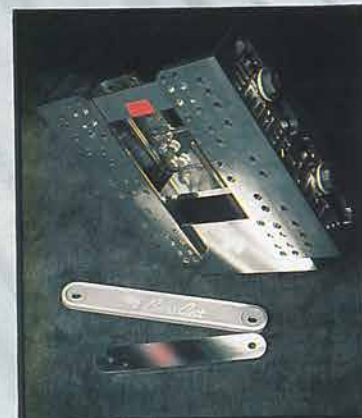
Features

STANDARD EQUIPMENT:

- Dual Built-In Battery Chargers
- Lighted Storage Boxes
- CMC Jackplate
- Two Lowrance 1240-A's (F&R)
- Dual Bilge Pumps (Auto or Man.)
- Dual Aerators w/Timers
- Graphic Dash Panel
- Deluxe Steering Wheel
- Bubble Trim
- Metal Flake Cap
- Trim Stripe on Hull
- Console Tray w/Lighter
- Four Interior Courtesy Lights
- Livewell Control Valve
- Circuit Breakers
- Carpeted Floor Edging
- Three Seat Positions
- Two 13" Seat Extensions
- Battery Check Gauge
- Front Light Switch
- Euro Style Rocker Switches
- Removable Rear Lids
- Front Accessory Switch
- Dual Rear Livewells
- Front & Rear Cinch Blocks
- VDO Instrument Panel
- Stainless Steel Handrails
- Lockable Storage Boxes
- Hydraulic Lid Openers
- Metal Flake Insert
- Running Lights
- Tackle Box Shelf
- Master Switch
- Indicator Lights
- Horn
- Four Cleats (Flush Mount)
- Two Fishing Seats
- 12/24 Bow Panel w/6 Gauge Wire
- Rear & Front Trim Switches
- Passenger Handrails
- Rod Straps
- Rope Bump Molding
- Dual Tanks
- Dual Steering
- PVC Enclosed Wiring Harnesses
- Color Coded Wiring



Lighted Storage and Rod Box Compartments



CMC Jackplate



12/24 Bow Panel w/6 Gauge Wire



Flush Mount Controls (Optional)



Dual Built-In Battery Chargers



Silhouette Package (Optional)

The Silhouette Package consists of a Metal Flake hull with a Gel Coat Boot. The top deck and hull stripping offers the customer the ultimate in custom effects.





Features

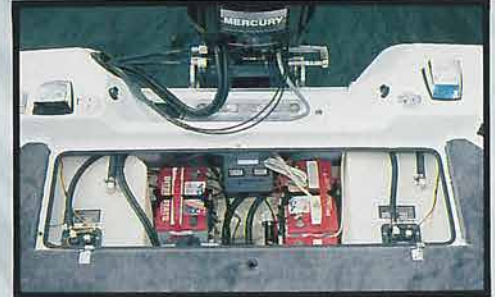
Caracal II
Sabre
Pantera II



Rear Trim Switch & Courtesy Light



Removable Rear Lids



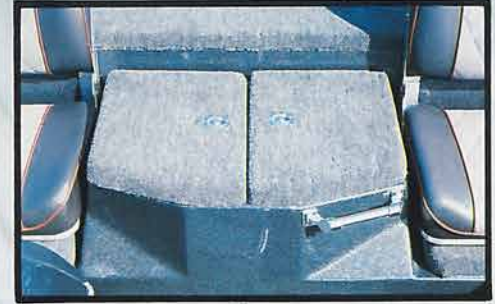
Fuel Tanks & Battery Area



Sealed Euro Style Rocker Switches



Ski Ladder (Optional)



Sabre: Dual Rear Livewells



12 Volt Accessory Plug



Pantera: Dual Rear Livewells



Trailers



Most people take the trailer sitting under that shiny new boat for granted...but we at Bass Cat take our trailers very seriously. Unlike most boat manufacturers, Bass Cat builds Bass Cat Trailers...one at a time, to fit the specific hull of each model of boat. Every member and cross support is jigged, fitted and welded to exact tolerances...there is zero adjustment on our trailers. All axles are jigged and welded in a pattern weld to assure minimal tire wear from caster to canter.

Each trailer is painted and carpeted to color coordinate with the boat for which it was built.

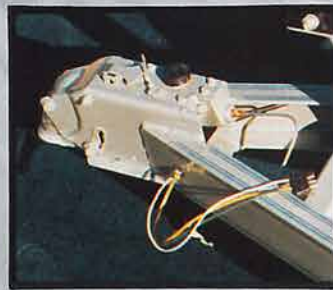
At Bass Cat your safety and the investment you have made in your boat are not taken for granted...we demand quality craftsmanship, it's a family tradition.

STANDARD FEATURES:

- 3000 Lb. Axle
- Waterproof Bearings
- 4" Steel Channel Construction
- 1200 Lb. Winch
- Crank Jack
- Recessed Spare Tire Mount
- Fiberglass Color Coordinated Fenders & Carpeting
- Recessed Waterproof Lights
- Polyurethane Enamel Finish
- 14" Slotted Chrome Wheels
- Spare Tire

OPTIONAL EQUIPMENT:

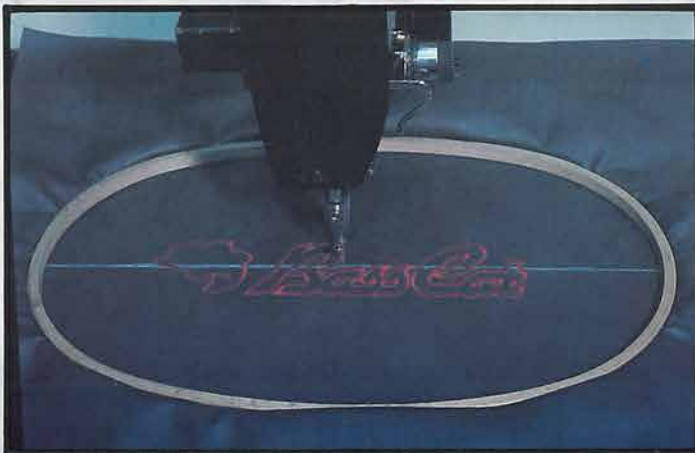
- Raised White Lettered Radial Tires
- Typhoon Aluminum Wheels
- Tandem Axle Trailer
- Surge Brakes
- Extra Bearing & Hub (Mounted Under Spare Tire)
- Removable Tongue
- Clear Coat Finish (2 coats required on white trailers)





Quality Craftsmanship...

Quality craftsmanship at Bass Cat is a family tradition which is uncompromised. Customer satisfaction is the basis of our success, of which we are very proud...hopefully you look for it in every facet of the Bass Cat. As you look at this "Family Album" from the Bass Cat factory, keep in mind that our boats, trailers, interior seating and the embroidery on the Bass Cat Jackets are made from raw materials at Bass Cat, not made for Bass Cat. When we put our name on our boat, we know it meets our uncompromising Quality Craftsmanship standards, not someone else's.





1989 Bass Cat Invitational

On March 4th and 5th we once again held our annual Bass Cat Invitational Tournament. This event is held every spring on Lake Norfolk just outside of Mountain Home, AR. We began as usual with the registration beginning on Wednesday at our office until 4:30 p.m. Friday. From there we moved the registration out to the Lake Norfolk Days Inn in the pool area until 10:00 p.m. Final preparations and flight schedules were prepared and posted after the registration.

Saturday morning came to find 430 boats and 860 people waiting to begin competing in this fun filled event. As the takeoff began so did the rain and Mother Nature's fury. As the day progressed several teams came in early as the weather pressed them off of the water. With the temperature approaching the freezing mark the rain made for a bone chilling cold. Well the rain continued off and on all day and right on through the weigh-in. This was one of the first times that most all of the bobbers weren't turned in for prizes.

The weigh-in was short although several large fish were brought to the scales. Bo James and Dale Clark caught a 6.07 lb. largemouth for third big bass of the day. Danny Barnes and Terry Thomas worked a jig for a 6.60 lb. largemouth and second big bass for the day. The largest fish of the day was a 7.47 lb. fish caught by the team of Jim Elsner and Wayne Tarver. This kept right along with the years past in that it always has taken over a 7 lb. bass to win.



There were four stringers over ten pounds weighed in on Saturday and none of the typical large stringers were brought in so that left much of the field in striking distance of the leaders.

Following the weigh-in everyone began preparing for the barbecue which was held once again at the fairgrounds. We prepared to feed somewhere around 1250 people including the families. That night they consumed 2 hogs, 2 halves of beef and 80 chickens. That was along with the sodas, coleslaw, baked beans and rolls which go along with a real southern style barbecue.



There were pitchin' contests for both young and old alike with some pretty nice prizes for the winners. Several people were introduced from various dealerships, sponsors and members of both the Regional and National Teams.

Midway through the barbecue Mother Nature continued to unleash her fury upon all of us as sleet and freezing rain began to fall.

The awards were presented for outstanding sales accomplishments in the 1988 model year. The first ranked dealership for outstanding sales in 1988 was Ozark Marine of Sherwood, AR. Owners Don Devore and Larry James accepted their award for them. The award for the second largest in sales went to Steve Eastwold of Eastwold Brothers Sales in Bull Shoals, AR. Carol Downing of The Boat Place was on hand and braved the weather driving all the way down from Belleville, IL, on that icy and snowy Saturday evening. All of that work so that he could be there personally to receive his award for placing third in sales for the 1988 model year with the Bass Cat family.

The Big Bass awards were then presented to the people mentioned earlier for their accomplishments in landing the lunkers for that day of competition.

As the drawings ran out and the evening came to a close it became time for us to close the evening by drawing for the Margay II and Bass Cat Trailer. This was a change in plans made earlier in the afternoon as the forecast turned worse. Originally the drawing was set for the final weigh-in on Sunday. By changing it to the barbecue it would have been possible for many to have departed on Sunday



morning or Saturday evening and allow more traveling time home.

The drawing was done by Cole Ezell, the grandson of Ron and Jan. As nerves tensed Cole drew out a paint paddle and Ron called out



Ice Bowl '89

the number. In a flash down the aisle ran Terry Davidson as Blaine Rantz pulled up the rear at his usual pace. We have only seen Blaine excited once and that was when he and Terry won this particular event two (2) years prior to this in 1987. What luck these two must have. There is no doubt that they are the only ones to win this tournament from both angles.



After a lot of discussion Ron and Rick decided that they would plan for the second day of competition to continue as originally set. How could they know what was in store for that evening?

Everyone awoke that morning to find between 1/2 to 1 inch of ice covering the roads and boat ramps. Takeoff was delayed while the best alternative was discussed with everyone's safety being the major factor of concern. Finally at just after eight (8) o'clock the second day of the tournament was cancelled and an awards ceremony was set up for 10:00 a.m. in the pool area of the Lake Norfolk Day's Inn. With people hanging from the guard rails the awards and the prizes were given out. First place went to Archie Riddle of Russellville, AR and Tom Wilson of Little Rock, AR, with a catch of 14.98 pounds. For their win they each received Gold Bass Cat rings with diamonds set in the fish's mouth along with a new Pantera II on a Bass Cat trailer. A stringer of 14.78 pounds won a new Sabre and second place for Sam Davis of Benton, AR and Doug Garrett of Cabot, AR. From third place on back prizes were given out as long as they would last. In Third Place and the heartbreak position were Paul Poindexter and Roger Nunn with 10.72 pounds. Close to them and finishing in fourth place were Danny Barnes and Terry Thomas with 10.50 pounds. From there the weight of the fifth place team fell to 9.48 pounds for Phil Bangert and Richard Morris.

With the second day cancelled the Diamond Ring for the largest bass of the tournament went to Jim Elsner for his 7.47 pound largemouth. That cancellation also left the money for the second day's big bass remaining. After much discussion it was decided to donate that along with the 10% originally planned to the Arkansas Game and Fish Commission earmarked for use on Lake Norfolk only. The total amount of this donation was \$3,850.00.

As always in the past we would like to take this time to those who came to this tournament just to help out or to service product of other types. They make a tremendous contribution to the success of this event. Among those are Meyer & Mullins Marine Service, Ulrich Marine and Pete Steinke for Mercury; the OMC service team for both Johnson and Evinrude; Ken Cowan and others with Lowrance Electronics; Bobby Lowe; Johnie Borden; Ray Pennington who cooked the meats; Danny White for just making the effort to come; also Galand Poe who has helped us every year to have those instant updates with the aid of the computer.

There are many more and we certainly don't intend to leave anyone out for we really appreciate all of the help. Without the assistance of the dealers, sponsors and most of all the customer attitude none of this would be possible.



1989 Bass Cat Invitational Winners

Some of the most memorable moments will be the time spent in the motel around the pool area or at the card table after the tournament. All of this occurred as most of those stayed around for an extra day or two awaiting the thaw so they could safely return home. This may be what made this tournament more of a success than any other single factor.

We're going to try it again in 1990 only a few weeks later in the year. The dates for 1990's Invitational are March 24th and 25th. Y'all come on over and join us on Lake Norfolk for some good fun and some good food. We hope to see you then!



1989 Sponsors

- | | | |
|--------------------|-------------------------|----------------------------|
| Abu Garcia | Flow Rite | Plano |
| Ace Tools | Foster Grant | Plastic Sales |
| Aladdin Industries | Galand Poe (computer) | Pradco, Inc. |
| Ankra | Gene Larew Tackle | Precision Art |
| Aurora Canvas | Jabez Mkt. | Producto Lures |
| Auto Mate | Jungle Labs | Redneck |
| Bill Lewis Lures | King Louie | Sarasota |
| Bosco | Lowe's Graphite Rods | Smith & Speight |
| Briggs Weaver | Lowrance | Smith's Whetstone |
| Buck Knives | Lunker Lures | Smithwick Lures |
| Cadillac Plastic | Mann's Bait | Spray Tech |
| Classic Mfg. | Marine Electrical | Storm Lures |
| CMC Powerlifts | Mercury Service Team | Stren Line |
| Crest Industries | Mid-Lake Corp. | Superior Coating & Plastic |
| Doug Conell Corp. | Moeller | Sunbeam |
| Dual Winds | Motorguide | Total Marine Design |
| Equalizer | Norbrook Tackle Systems | Tru-Turn |
| Estran Corp. | Olin Chemicals | Turbo |
| Fiskars Corp. | Osgood Co. | Wes-Bar Corp. |
| | | Woodstream |



LIMITED FIVE-YEAR WARRANTY

Bass Cat Boats warrants, to the original purchaser, each new boat or trailer used for noncommercial uses, to be free from defects in workmanship and material for a period of two (2) years under normal conditions of recommended use, with a five (5) year hull warranty under the same conditions.

To validate this warranty, the boat registration card must be returned to Bass Cat Boats within fifteen (15) days after original purchase. All boat manufacturers are required by Federal law to notify first purchasers in the event any defect is discovered "which creates a substantial risk of personal injury to the public," or any noncompliance by manufacturer. The failure of any purchaser to fill out and return the warranty registration card may make it impossible for Bass Cat Boats to give direct notice to such purchaser.

During this two-year period, any authorized warranty repairs will be made free of charge by Bass Cat Boats at their manufacturing plant in Mountain Home, Arkansas, or at their option, by an authorized Bass Cat Boats boat dealer at the dealer's store or service center. Transportation costs to the factory are the responsibility of the purchaser. All warranty repairs must be approved by Bass Cat personnel, whose decisions are final.

This warranty does not apply to (1) any boat which shall have been repaired or altered in any way so as to affect its use and operation; (2) gelcoat cracking, crazing, blistering, or discoloring; (3) windshield breakage; (4) any boat which has been subject to misuse, negligence or accident, or used for racing or commercial purposes or operated contrary to any printed instructions furnished by Bass Cat Boats; (5) upholstery damage; (6) accessories, steering systems, pumps, lights, and other equipment not manufactured by Bass Cat Boats (these are covered by the warranties (if any) of the respective manufacturers supplying these items and are not covered under this limited warranty); (7) any boat which has been overpowered according to the maximum recommended engine horsepower specified on the capacity plate affixed to the boat.

This warranty is expressly in lieu of all other warranties, express or implied, including any implied warranty of merchantability or fitness for a particular purpose, and in lieu of all other obligations or liabilities on the part of Bass Cat Boats, and Bass Cat Boats expressly denies on the part of any person to incur or assume for it any other liability in connection with the sale or use of its boats and trailers. Implied warranties, if any, given by valid law shall be limited to the duration of this written warranty.

The obligation of Bass Cat Boats, under this warranty, shall be limited to the repair or replacement of any part which is judged defective by Bass Cat Boats. Bass Cat Boats will not be liable for haul-out, launching, towing or storage charges, inconvenience or loss of time or income, or any other special or consequential damages of any kind or nature.

The information in this literature is based upon the latest product information available at the time of publication approval. Bass Cat Boats reserves the right to make changes anytime, without notice, in the colors, equipment, specifications, materials, hulls, prices, and to discontinue models. When changes are made, we reserve the right to do so without incurring the obligations to equip or modify existing models built prior to the date of such changes.

Innovations In The Bass Boat Industry... Yesterday & Today!

Bass Cat Jewelry

*Please call for current price quotations.





Your Authorized Bass Cat Dealer:



Total Performance Bass Boats

Bass Cat Boats ■ P.O. Drawer 1360 ■ Mountain Home, Arkansas 72653