

95

# A Family Tradition



**Total Performance Bass Boats**





# A Family Tradition

Many changes have occurred in the last twenty-five model years since Jan and I started this company. In 1971, our first boats were built only on custom orders, and we're proud to say many of those customers are still with us today. Over the years we've grown to become what is a modest company by basing our primary concern's on quality and value, and continually striving for perfection in all aspects of manufacturing. Our family business has become one where our family includes everyone in our operation, as well as, our customers. You can see and feel the fellowship on the faces of those who attend our "Owners Invitational" each spring.

In this brochure you will see the finest in bass boats available today. Innovative models, equipment, and concepts that show Bass Cat Boats has developed these ideas for the serious angler. Ideas and developments that will make everyone's day much more enjoyable on the water... not just bells and whistles, but realistic high quality products.

Our re-designed Pantera II has an improved hull which rides and handles better, with overall smoother, more aerodynamic lines. The Eyra has a floor plan for the most competitive fisherperson. While the Classic and Sabre offer a little less equipment for alot less money. We design, and build our own seats, wiring harnesses, and trailers to match each boat model with excellence. Excellence that stands out in each boat we build.

Every year people ask us what we will do next, or what new models are we working on? We will always be working on something innovative to the industry, and there will always be new models. It is those ideas and developments that have put us on the brink of technology... an area we will continue to lead.

As is true with the finest of homes and automobiles, we build dreams! Dreams of days on the water with family and friends. Dreams and memories of the days you will never forget. We build good solid values and realistic products. It's our way...without gimmicks.

We would like to be a part of your memories and your dreams. As you look through this brochure, we urge you to consider everything from safety to comparable products. Most of all we want you to be happy with whatever product you select and we welcome the "challenge"...to provide you the best possible product available.

Safe Boating and Good Fishing,

Ron Pierce  
President



Ron & Jan Pierce...founded Bass Cat Boats in 1971.





# Quality Craftsmanship...

Quality Craftsmanship at Bass Cat is a family tradition which is uncompromised. Customer satisfaction, while continually striving for perfection in our products is the basis of our success, of which we are very proud. Hopefully you look for it in every facet of the Bass Cat Boat. As you look at this "Family Album" of photos taken throughout the Bass Cat factory, keep in mind that our boats, trailers, seating, wiring harnesses and even the embroidery on the Bass Cat jackets are made from raw materials at Bass Cat, *not made for Bass Cat.*

When we put the Bass Cat name on our boat, we know that every facet of the final product meets our uncompromising Quality Craftsmanship standards... *not someone else's.*





# Margay



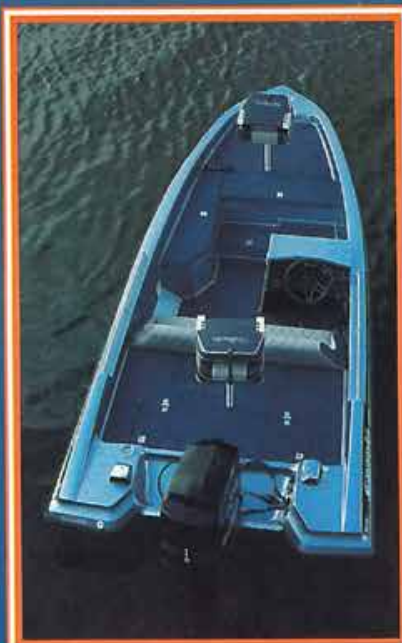
We recommend you always wear a U.S. Coast Guard Approved Life Jacket anytime your outboard is running...with an emergency safety switch attached.

The Margay is a perfect entry level bass boat for fishermen desiring superb performance and handling at a modest price. When rigged with motors in the 75 to 120 h.p. range the Margay is not only economical, but has great performance, and handling, with a stable ride.

Fishermen will appreciate the dual aerated rear livewells, comfortable bench seating, and the over all fishing layout found in the Margay. And as you can see by reviewing the standard features, this is not a stripped down boat...but one with features found only in "big boats". We feel that even though you don't require, or desire a "big" boat, you still expect and deserve this same "Bass Cat" quality and workmanship found in our top of the line boats.

#### Specifications:

Length .....	16'9"
Beam .....	79"
Approx. Wt. ....	880 lb.
Fuel Capacity .....	21 Gal.
Max. H.P. Range ...	75-120 H.P.



#### Standard Features:

Metal Flake Cap and Insert • Trim Stripe on Hull • Rope Rub Rail • Bubble Trim • Carpeted Rod Box • Stainless Steel Handrails • Carling Switches • Color Coded Wiring • Bilge Pump • 12/24/36 Bow Panel with 6 Ga. Wire • Custom Bench & (2) Tempres Fold Down Fishing Seats • VDO Instruments (Tach, Speed, Volt, Fuel) • Graphics Dash Panel • Dual Aerated Livewells • Livewell Control Valve • Livewell Flush Valve • PVC Enclosed Wiring Harness • Front Trim Switch • Deluxe Steering Wheel • Two Courtesy Lights • Horn • Livewell Timer • Trimmed Floor Edging • Rod Strap • Lockable/Carpeted Storage Compartments • Built-In 21 Gal. Fuel Tank • Running Lights

#### Optional Equipment:

Plexiglas Windscreen • Metal Flake Hull • Silhouette Package (inc. Trailer) • Ski Tow Bar • Pro Butt Seat • Dual Steering • Rectrulating Livewell w/Timer • Rod Strap • Lowrance Electronics • MotorGuide 775, 765, 750, 675, or 665 Trolling Motor • Flush Mount Controls: OMC, Mercury, Yamaha or Suzuki • Cigarette Lighter • Maxima AM/FM/Cass Stereo • Custom Boat Cover

#### Trailer:

\*2300 pound Axle • Three (3) Inch Channel Construction • Waterproof Wheel Bearings • Recessed/Waterproof Lights • White Spoke Wheels • 1200 lb. Winch • Custom Paint and Matching Carpet • Note: No Spare Tire Inc.

#### Optional Trailer Package:

• Includes 4" Channel Construction • Spare Tire • Chrome "Star" Spoke Wheels





# Caracal



We recommend you always wear a U.S. Coast Guard Approved Life Jacket anytime your outboard is running...with an emergency safety switch attached.

### Standard Features:

Metal Flake Cap • Trim Stripe on Hull • Rope Rub Rail • Bubble Trim • Metal Flake Insert • Carpeted Floor Edging • Stainless Steel Handrails • Carling Switches • Front Trim Switch • 12/24/36 Bow Panel with 6 Ga. Wire • Color Coded Wiring • PVC Enclosed Wiring Harness • VDO Instrument Panel (Tach, Speed, Volts, Fuel) • Graphics Dash Panel • Deluxe Steering Wheel • Circuit Breakers • Dual Aerated Livewells • Livewell Control Valve • Livewell Flush Valve • (2) Tempress Fold Down Seats • Three Seat Positions • Two 13" Seat Extensions • Passenger Handrails • Running Lights • Front Light Switch • Lockable Storage Boxes • Hydraulic Lid Openers • Removable Rear Lids • Rear Clinch Block • Tackle Box Shelf • Master Switch • Horn • Flush Mount Cleats • Rod Strap • Dual Steering • LDT 3001 Temp. Gauge • CMC Jackplate • Bilge Pump (Auto or Man.) • Aerator w/Timer • Two Courtesy Lights

### Optional Equipment:

• Silhouette Package • Pro Butt Seat • Lowrance Electronics • Elevated Flipping Deck • Hyd. CMC Jackplate • Pro Aeration • Cigarette Lighter • MotorGuide 775, 765, 750, 675, or 665 Trolling Motor • Ski Tow Bar & Ladder • 46 Gal. Fuel Tank • BP100 LCD Digital Dash • Anchor Reins • Moor Mates • Plexiglass Windscreen • Maxima AM/FM/Cass Stereo • Custom Boat Cover



The Caracal is considered the "Hot Rod" of the Bass Cat line. The Caracal will outperform, percent wise... per H.P. any boat in the Bass Cat line. So, all you fishermen with a few boyhood actions surfacing every now and then, this is the boat for you!

If your not concerned about "hot rodding", this boat will still impress you. Tournament fishermen will certainly appreciate the performance, and handling of this 17' boat as well as great fishing decks both front and rear. Fisherman will also be impressed with the list of standard features, from VDO Gauges, hydraulic lid openers, dual steering, and a Lowrance 3001 Surface Temperature Gauge to name a few.

### Specifications:

Length ..... 17'  
Beam ..... 89"  
Approx. Wt. ....1050 lb.  
Fuel Capacity ..... 27 gal.  
Max. H.P. Range . 115-150 H.P.





# Sabre



We recommend you always wear a U.S. Coast Guard Approved Life Jacket anytime your outboard is running...with an emergency safety switch attached.

The Sabre may be the "sleeper" of the Bass Cat line. This 18' boat is a true tournament anglers dream machine. Anglers will find plenty of storage both within the deck layout as well as under the bench seat. Dual rear livewells are found behind the bench seat, and the Sabre comes loaded with standard equipment.

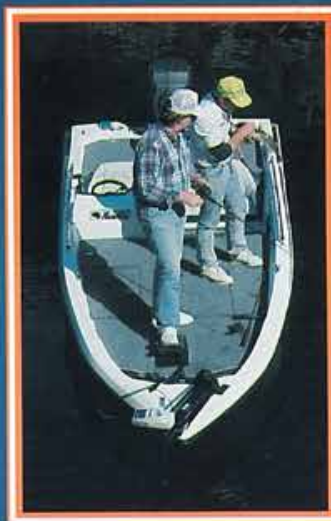
An optional Flippin' Deck as shown is a welcome addition to anglers who like to do a lot of flipping' in the brush, plus, it allows for added storage space beneath the deck.

A dual console model is also available for those who enjoy skiing as well as fishing, or simply prefer the appearance of the dual console Sabre.

\* The Sabre is available in motor combo format for added value and equipment.

#### Specifications:

Length .....	18'
Beam .....	90"
Approx. Wt. ....	1250 lb.
Fuel Capacity .....	27 Gal.
Max. H.P. Range ..	135-175 H.P.



The Sabre shown with the Optional Elevated Flippin' Deck.

#### Standard Features:

Metal Flake Cap and Insert • Trim Stripe on Hull • Rope Bump Molding • Bubble Trim • Carpeted Rod Box • Stainless Steel Handrails • Carling Switches • Color Coded Wiring • Bilge Pump • 12/24/36 Bow Panel With 6 Ga. Wire • PVC Enclosed Wiring Harness • Custom Bench & (2) Tempress Fold Down Fishing Seats • Two 13" Seat Extensions • VDO Instrument Panel (Tach, Speed, Volt, Fuel) • Graphics Dash Panel • Dual Aerated Livewells • Livewell Control Valve • Livewell Timer • Livewell Flush Valve • Horn • Carpeted Floor Edging • Rod Strap • Lockable Storage Compartments • Running Lights • Front Light Switch • Indicator Lights • Front Accessory Switch • Master Switch • Circuit Breaker • PVC Enclosed Wiring Harness • Three Seat Positions • Passenger Handrail • Rear Clinch Block • Tackle Box Shelf • Removable Rear Lid • Dual Steering • Hydraulic Lid Openers • I240A In-Dash • Jack Plate

#### Optional Equipment:

• BP100 LCD Digital Dash • Silhouette Package • Ski Tow Bar • Ski Ladder • Plexiglass Windscreen (Std. on DC) • Pro Butt Seat • Lowrance Electronics • MotorGuide 775, 765, 750, 675, or 665 Trolling Motor • SS Welded Handrails • Recirculating Livewells w/Timer • Flush Mount Controls: OMC, Mercury, Yamaha or Suzuki • 42 Gal. Fuel Tank • Built-In Battery Charger (3) • Flipping Deck Insert • Pro Aeration • Anchor Reins • Moor Mates • Custom Boat Cover • Cleats • Deluxe Bow Shroud w/I240A • Maxima AM/FM/Cass Stereo



# Calico



We recommend you always wear a U.S. Coast Guard Approved Life Jacket anytime your outboard is running...with an emergency safety switch attached.

#### Standard Features:

Metal Flake Cap • Trim Stripe on Hull • Rope Rub Rail • Bubble Trim • Metal Flake Insert • Carpeted Floor Edging • Ceiling Switches • Front Trim Switch • 12/24/36 Bow Panel with 6 Ga. Wire • Color Coded Wiring • PVC Enclosed Wiring Harness • VDO Instrument Panel (Tach. Speed, Volt, Fuel) • Graphics Dash Panel • Lowrance 1240A In-Dash • Deluxe Steering Wheel • Circuit Breakers • Dual Aerated Livewells • Livewell Control Valve • Livewell Timer • Livewell Flush Valve • Bilge Pump • (2) Tempress Fold Down Fishing Seats • Running Lights • Lockable Storage Boxes • Hydraulic Lid Openers • Console Tray • Master Switch • Horn • Rod & Ski Strap • Dual Steering • Carpeted Storage Boxes • Cigarette Lighter • 6' Rod and Ski Storage • Courtesy Lighting • Sliding Bucket Seats (2), Passenger Seat Also Swivels • AM/FM Cassette Stereo • Framed Wind Screens

#### Optional Equipment:

• Full Top • Side Curtains • Aft Curtains • Lowrance Electronics • Anchor Reins • Moor Mates • MotorGuide 775, 765, 750, 675, or 665 Trolling Motor

• Funshine Package Which Includes:  
Silhouette Package  
Ski Ladder  
Ski Tow Bar  
Maxima Marine 50 Watt AM/FM/WB Cassette Stereo with 100 Watt Speakers and Equalizer

The Calico is a very high quality, high performance, "fun boat" designed for the family that enjoys skiing, and pleasure boating, as well as, fishing. A truly sleek boat...offering exceptional ride and performance with graceful handling characteristics even in rough water conditions. The quality "shines" right up to the optional Maxima Stereo with 100 watt waterproof speakers.

Most of all we would like for you to compare the quality of hand craftsmanship, top of the line materials and components including VDO Instrumentation, and the attention to detail when considering your boat purchase. At Bass Cat our "Families" primary concern is that your family has many years of safe, trouble free-boating pleasure.



#### Specifications:

Length ..... 18'  
Beam ..... 90"  
Approx. Wt. .... 1200 lb.  
Fuel Capacity ..... 33 gal.  
Max. H.P. Range . 115-175 H.P.



# Eyra



We recommend you always wear a U.S. Coast Guard Approved Life Jacket anytime your outboard is running...with an emergency safety switch attached.

The Eyra represents a new era in eighteen foot bass boats designed specifically for the serious tournament angler. A new front deck positions the angler 10-12" closer to the action with wider deck room. A lowered foot control platform offers less leg and back stress. This recessed area, also, is home for bow mounted graphs; they're out of the way, yet highly visible.

A new console offers even the largest of men leg room and roomy comfort. A new tilt wheel, seats with high backs and "wrap around" support help provide additional body control and comfort during rough water or long run situations. Behind the seats you will find a redesigned extra wide beam with 2000 era styling which provides added room and good looks to the back of the boat. If you fish tournaments with H.P. limitations take a demo ride in this new Eyra...this is exactly what you've always wanted... a screamer with a 150, and a layout with features you've never dreamed of.

#### Specifications:

Length .....	17'11"
Beam .....	92"
Approx. Wt. ....	1350 lb.
Fuel Capacity .....	36 Gal.
Max. H.P. Range ..	150-175 H.P.



#### Standard Features

BP100 LCD Digital Dash • Metal Flake Cap and Insert • Trim Stripe on Hull • Rope Rub Rail • Bubble Trim • Stainless Steel Handrails • Carling Switches • Color Coded Wiring • Dual Auto Bilge Pump • 12/24/36 Bow Panel with 6 Ga. Wire • PVC Enclosed Wiring Harness • (2) Tempress Fold Down Fishing Seats • Dual Aerated Livewells w/ Recirculator • Livewell Flush Valve • Step-On Trim Switches • Deluxe Momo Steering Wheel • Courtesy Lights • Horn • Trimmed Floor Edging • Rod Straps (2) • Lighted, Lockable, Carpeted Storage Compartments • Running Lights • Dual Steering with Tilt • Front Navigation Switch • E.T.A. Circuit Breakers • Master Power Switch • Ice Chest • Battery Check Gauge • Lester Built-In Triple Battery Charger • Lowrance 1240A In-Dash • Upper & Lower Transom Support Plates • CMC Jackplate

#### Optional Equipment:

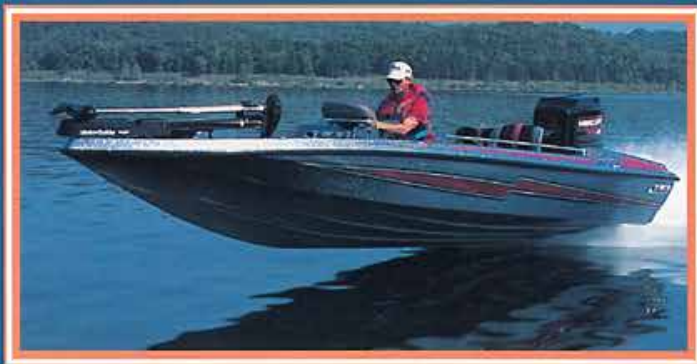
Silhouette Package • Pro Butt Seat • Lowrance Electronics • MotorGuide 775, 765, 750, 675, or 665 Trolling Motor • Flush Mount Controls: OMC, Mercury, Yamaha or Suzuki • Hydraulic CMC Jackplate • Maxima AM/FM/Cass Stereo • Elevated Flipping Deck • Pro Aeration • 1.5" Steering Wheel Extension • 42 Gal Fuel Tank • Plexiglass Windscreen • Anchor Reins • Moor Mates • GIL Battery Trays • Custom Boat Cover



# Classic



We recommend you always wear a U.S. Coast Guard Approved Life Jacket anytime your outboard is running...with an emergency safety switch attached.



#### Standard Features:

Metal Flake Cap • Trim Stripe on Hull • Rope Rub Rail • Bubble Trim • Metal Flake Insert • Carpeted Floor Edging • Carling Switches • Front Trim Switch • 12/24/36 Bow Panel with 6 Ga. Wire • PVC Enclosed Wiring Harness • Color Coded Wiring • VDO Instrument Panel (Tach, Speed, Volts, Fuel) • Graphics Dash Panel • Deluxe Steering Wheel • Circuit Breakers • Dual Aerated Livewells • Livewell Control Valve • Livewell Timer • Livewell Flush Valve • Bilge Pump • (2) Tempress Fold Down Fishing Seats • Running Lights • Lockable/Carpeted Storage Boxes • Hydraulic Lid Openers • Master Switch • Horn • Rod Strap • Dual Steering • Courtesy Lights (2) • Stainless Steel Handrails • Three Seat Floor Positions • Driver & Passenger Tempress Bucket Seats

#### Optional Equipment:

Elevated Flipping Deck • Bench Seat • Lester Built-In Triple Battery Charger • Flush Mount Deck Cleats • Rectriculating Livewell w/Timer • Lowrance Electronics • CMC Jackplate (Man. or Hyd.) • MotorGuide 775, 765, 750, 675, or 665 Trolling Motor • Flush Mount Controls: OMC, Mercury, Yamaha, or Suzuki • Ski Ladder • Ski Tow Bar • Plexiglass Windscreen • Silhouette Package • SS Welded Handrails • Anchor Reins • Moor Mates • Pro Butt Seat • Pro Aeration • Maxima AM/FM/Cass Stereo • Dual Consoles (DC) • Padded Seating on Rod Box Lids (DC) • GIL Battery Trays • Custom Boat Cover

The Classic features the same 19' length and hull design as the Bass Cat Pantera II. This design provides the ultimate in "big boat" performance and handling in all types of water conditions, giving you a safe and dry ride. Dual full length rod boxes and front deck storage areas to hold all the rods and tackle needed for a serious day of fishing for you, and your partner. Additional storage is found under the seats, with an ice chest located between the driver and passenger seats. Behind the seats you will find dual aerated, timed livewells and a deck big enough for your partner to stretch out and take a nap if he, or she, get worn out putting fish in the boat.

A Classic dual console (DC) is available for those who use their boat for skiing as well as fishing, or just prefer the appearance of dual console boats.

The Classic's hull design and overall quality, hand craftsmanship provide the best overall performance of any bass boat on the market...bar none.

#### Specifications:

Length .....	19'
Beam .....	92"
Approx. Wt .....	1250 lb.
Approx. Wt .....	1350 lb.
Fuel Capacity .....	36 gal.
Max. H.P. Range .	115-200 H.P.

\*Available in motor combo format for added value.







# Pantera II

We recommend you always wear a U.S. Coast Guard Approved Life Jacket anytime your outboard is running...with an emergency safety switch attached.

Take a close look... new innovative hull and deck designs abound on the all new Panthera. The New Panthera II is still the "Rolls Royce" of the Bass Cat line, it's just a newer "Rolls". From the eight stringer hull to the BP100 LCD Digital Dash, the Panthera II is pure perfection in quality, craftsmanship, and boating innovations which puts new meaning in our tag line...*Total Performance Bass Boats*. Years of planning and discussions with professional fishermen have produced a new re-designed Panthera II. The new bow design places the fisherman 10-12" closer to the action, while providing additional deck space for a buddy when he feels he's getting "front ended". This new deck also features a move of the console to a more forward position allowing even the largest of anglers ample room and comfort behind the new Momo tilt steering wheel. New comfort is also found in the new bench seats. Higher backs and wrap around support provide more comfort during those long early morning runs. The rear section of the new deck of the Panthera II also finds styling changes. Smoother rounded corners are more aerodynamic and allow motor control cabling to exit at the center of the splashwell and enter the engine with less binding

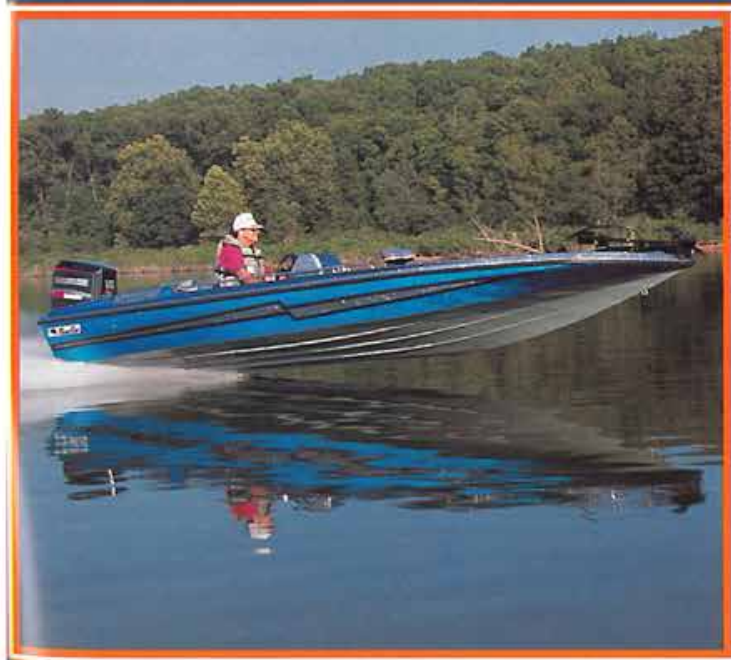
and kinking as they link the console control to the engine.

A deeper hull on the re-designed Panthera II provides an even smoother, no porpoise, rough water ride than the old hull for which the Panthera has been so noted for throughout the industry. This new hull design also allows for reduced backwash on shut down.

The Panthera II DC is available with dual consoles for those who prefer the looks and added protection from the elements that they offer their passengers.

Compare the standard features, performance, handling, rough water ride, quality craftsmanship, customer satisfaction, and reputation of the Bass Cat Panthera II to any bass boat on the market...bar none. You will see, regardless of which Panthera II you might choose, one thing for sure...you can't make a bad choice.





**Standard Features:**

BP100 LCD Digital Dash • Lester Built-In Triple Battery Charger • Lighted Storage Boxes • CMC Jackplate • Two Lowrance 1240As (F&R) • Dual Bilge Pumps (Auto or Man.) • Dual Aerated Livewells w/ Timers • Livewell Flush Valves • Graphic Dash Panel • Deluxe Tilt Steering Wheel • Bubble Trim • Metal Flake Cap • Trim Stripe on Hull • Console Tray w/Lighter • Four Interior Courtesy Lights • Livewell Control Valve • Circuit Breakers • Carpeted Floor Edging • Three Seat Positions • Two 13" Seat Extensions • Battery Check Gauge • Front Light Switch • Carling Switches • Removable Rear Lids • Front Accessory Switch • Dual Rear Livewells • Rear Cinch Block • Stainless Steel Handrails • Lockable Storage Boxes • Hydraulic Lid Openers • Metal Flake Insert • Running Lights • Tackle Box Shelf • Master Switch • Indicator Lights • Horn • Four Cleats (Flush mount) • (2) Tempress Fold Down Fishing Seats • 12/24/36 Bow Panel w/6 Gauge Wire • Front Trim Switch • Passenger Handrails • Rod Strap • Rope Bump Molding • Dual Fuel Tanks • Dual Steering • PVC Enclosed Wiring Harness • Color Coded Wiring • Mercury Switches • Recessed Trolling Motor Petal Basin at Bow

**Optional Equipment:**

Dual Consoles • Silhouette Package • Ski Ladder • Ski Tow Bar • Flush Mount Controls: OMC, Mercury, Yamaha or Suzuki • Pro Butt Seat • Lowrance Electronics • MotorGuide 775, 765, 750, 675 or 665 Trolling Motor • Hydraulic CMC Jackplate • Elevated Flipping Deck • Pro Aeration • SS Welded Handrails • 1.5" Steering Wheel Extension • Lighted Livewells • Anchor Reins • Moor Mates • GIL Battery Trays • Plexiglass Windscreen • VDO Instrumentation (Tach, Speed, Volts, Fuel, Quartz Clock) • Maxima AM/FM/Cass Stereo • Custom Boat Cover

**Specifications:**

Length ..... 19'  
 Beam ..... 92"  
 Approx. Weight ..... 1400 lb.  
 Approx. Weight (DC) ..... 1460 lb.  
 Fuel Capacity ..... 52 Gal.  
 Max. H.P. Range ..... 135-200 H.P.





# Features



### The BP100 LCD Digital Dash

The Bass Cat BP100 LCD Dash received Honorable Mention (2nd Place) for marine product innovation in world wide competition. Yes...its that good.

Fishermen will be amazed at the amount of information that can be retrieved with the touch of a finger. The LCD screen is driven from a 12K micro processor thru solid state circuitry. This processor is very reliable and provides you useful information...no gimmicks. You will be amazed as you review the following partial listing of basic features available at your touch.

### BP100 Basic Features:

- LCD Digital Dash Readout • Clock
- Security System • Trip Odometer
- Surface Temperature Readout • Barometer • Digital Compass • Trip Time • Hours • Air Temperature • Fuel Gauges (2) • % Engine Efficiency Gauge • Tachometer • Trim Gauge • Speedometer • Accessory Switch • Programmable Aerators • Oil Monitor • Voltmeter • Internal Circuit Protection • Continual Battery Monitors • Thermal Breakers • And More



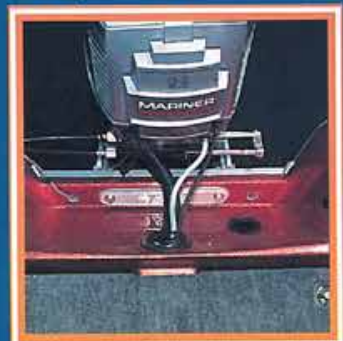
Front Bow Layout of Pantera II, Eyra Similar W/ Extended Recessed Area to Rt. of Trolling Motor Basin for Bow Mounted Graphs



Flush Mount Controls (Optional)



Perko Locks



Splashwell On Eyra & Pantera II



CMC Manual Jackplate



Flippin' Deck Insert (Optional)





# Features



Lighted Rod Box and Storage Compartments



SS Welded Handrails (Optional)



Maxima AM/FM/Cassette (Opt.)



GIL Battery Trays (Optional)



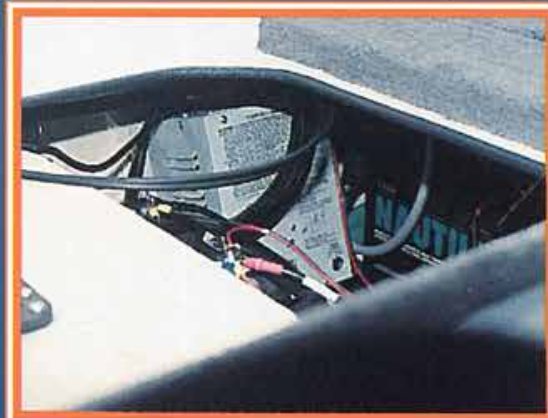
Silhouette Package (Optional)



Rear Courtesy Light & Switch



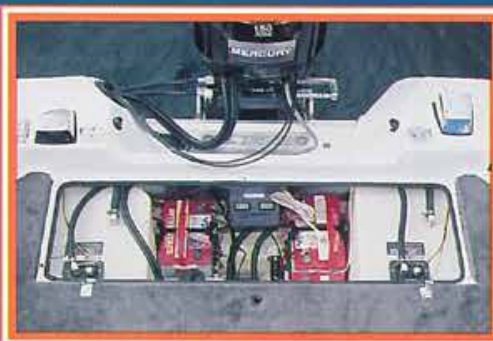
Removable Rear Lids



Lester Built-In Triple Battery Charger



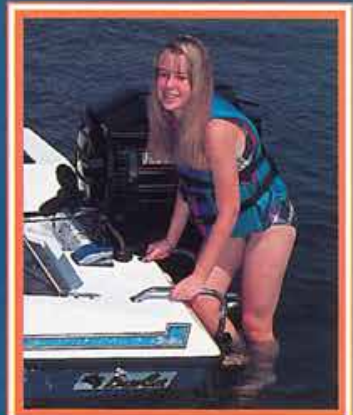
12 Volt Accessory Plug



Easy Access To Fuel Tanks and Battery Area



Dual Rear Aerated Livewells



Ski Ladder (Optional)



# Trailers



Most people take the trailer sitting under that shiny new Bass Cat Boat for granted...but we take our trailers very seriously. Unlike most manufacturers, Bass Cat builds Bass Cat Trailers...one at a time, to fit the specific hull design of each model boat. Every member and cross support is jigged, fitted and welded to exact tolerances...there is *zero adjustment* on a Bass Cat Trailer. Axles are also jigged, and welded in a pattern weld to assure minimal tire wear from caster to camber. Finally, each trailer is painted and carpeted to coordinate with the boat for which it was built.

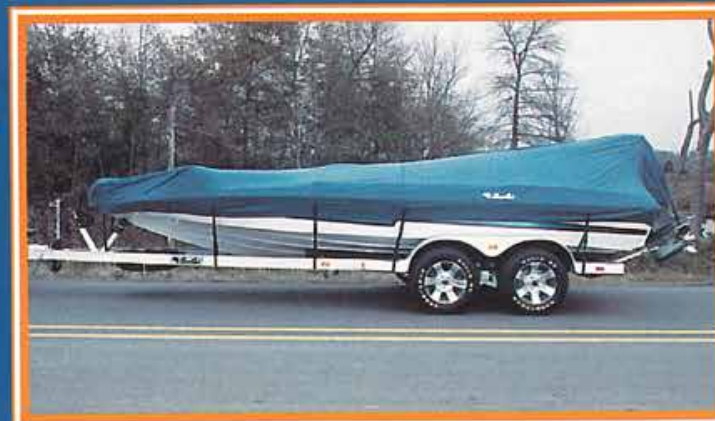
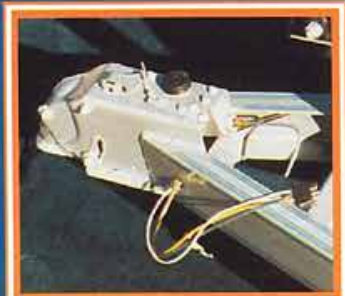
At Bass Cat your safety and the investment you have made in your boat are not taken for granted...we demand quality craftsmanship, it's a family tradition.

#### Standard Features

3000 lb. Axle • Waterproof Bearings • 4" Steel Channel Construction • 1200 lb. Winch • Quick Release Crank Jack • Recessed Spare Tire Mount • Fiberglass Color Co-ordinated Fenders & Carpeting • Recessed Waterproof Lights • Polyurethane Enamel Finish • 14" Chrome Wheels • Spare Tire • Surge Brakes (Std. on PantherII, Classic, Eyra, and Sabre Trailers)

#### Optional Equipment

Raised White Lettered Goodyear Eagle ST Radial Tires • Aluminum Wheels • Tandem Axle Trailer • Surge Brakes • Spare Hub and Bearing (Mounted Under Spare Tire) • Removable Tongue • Clear Coat Finish (2 Coats Required on White Trailers)







**To Order Please Call\***

Bass Cat Boats • (501) 481-5135

MasterCard and VISA Accepted

\* Office Hours: 8:00 a.m. - 4:30 P.M. (CST)  
Monday thru Friday

+ All Items Subject to Availability, and Price Change.  
Please Allow 4-6 Weeks for Delivery.

The following pages of clothing and accessories have been carefully chosen because of their quality and value. We hope you enjoy the items we have deemed worthy to carry the Bass Cat Logo.



**Soft Sueded Jacket**

**\$ 87.95**

- 100% DuPont "Sueded" Supplex® outer shell • Polyester filled contrasting gold quilt lining • Sculpted yoke back • Machine Washable
- Sizes: S, M, L, XL, 2XL, 3XL • Colors: Atlantis Blue, Hunter Green



**Sweatshirt Jacket**

**\$ 62.95**

- 100% soft DuPont® cire nylon shell • 100% polyester batting with 100% nylon lining • 100% acrylic knit collar, cuffs, and waistband • Zippered front & drawstring hood of soft gray fleece • Slash Pockets with snap closure • Machine Washable • Sizes: XS, S, M, L, XL, 2XL, 3XL • Colors: Navy, Red, Black, Marron, Jade and Grey



*Denim Sweatshirt Jacket*

**Denim Sweatshirt Jacket**

**\$ 71.95**

- 100% cotton "Stone Mountain" (laundered denim) shell • 100% polyester batting with 100% nylon lining • 100% acrylic knit collar, cuffs, and waistband • Zippered front with drawstring hood of soft fleece • Slash pockets • Machine Washable • Sizes: XS, S, M, L, XL, 2XL, 3XL • Colors: Charcoal or Light Blue Denim



**Flannel Lined Youth Jacket**

**\$ 31.95**

- Nylon oxford shell • Brushed polyester flannel lining • Rib knit collar, cuffs, and waistband • Machine Wash • Youth Sizes: S, M, L • Colors: Red and Royal Blue

**Quilt Lined Youth Jacket**

**\$ 38.95**

- Nylon oxford shell • Nylon polyfill lining • Rib knit collar, waistband, and cuffs • Machine Wash • Youth Sizes: S, M, L • Colors: Red and Royal Blue





**To Order Please Call:**

**Bass Cat Boats • (501) 481-5135**  
**\* Office Hours: 8:00 a.m. - 4:30 p.m. (CST)**  
**Monday thru Friday**

\* All Items Subject to Availability, and Price Change.  
 Please Allow 4-6 Weeks for Delivery.

MasterCard and VISA Accepted



**Voyager Jacket** (Shown at the Left Above) **\$ 67.95**  
 • Zip-Thru Collar • Zippered side pockets • Rib-knit collar, cuffs, and waistband • 65% Fortrel® polyester/ 35% combed cotton fabric • Body is sport-fleece lined and sleeves are quilt lined • Colors: Jade/Navy, Navy/Grey, Red/Navy, Pine Green/Navy, Maroon/Navy, Black/Grey • Sizes: XS, S, M, L, XL, 2XL, 3XL (Fit is Small, we suggest one size larger than normal)

**Somerset Jacket** (Shown to the Right Above) **\$ 71.95**  
 • Zip front closure with storm flap • Stand-up collar with hidden hood • Contrasting bi-swing back and double entry patch pockets • Self elasticized waistband and cuffs with snaps • 65% Polyester/35% cotton poplin fabric • Micro coated to be water and wind resistant • Colors: Hunter Green/Khaki, Khaki/Navy, Indigo/Khaki, Black/Brick Red • Sizes: S, M, L, XL, 2XL



**Brass Belt Buckle** **\$ 15.00**  
 • Solid brass with an embossed Bass Cat Logo, and Bass Cat Boat  
 • Size: 2 3/4" x 2"



**Custom Mug** **\$4.00**  
 • Gloss Black with a bright metallic gold imprint • Dishwasher Safe

**Bass Cat Patches** **\$ 4.00**  
 • White or Red with contrasting trim



**Windsuit** (Shown Above Left) **\$ 69.00**  
 • Roomy pullover style • Flannel Lining • Hood with cordlocks • Self-Elasticized cuffs • Zippered leg opening • 100% DuPont® soft nylon fabric • Colors: Navy or Black • Sizes: S, M, L, XL, 2XL, 3XL

**Pro-Ranter Rainsuit** (Shown Above Right) **\$ 138.00**  
 • 100% Waterproof PVC Coated Oxford Nylon • All seams are fully taped • Nylon Taffeta lined • Interior Cuff • Two-way fleece lined cargo pockets • reinforced seat and knees • Colors: Navy or Red • Sizes: XS, S, M, L, XL, 2XL (Note: Jacket sizes run large)



**Hobie Sunglasses**  
**The Shield** (Shown Above Left) **\$ 65.00**  
 • Frame Colors: Black, Blue, Silver, and White • Polarized Triacetate Lens Options: Dark Grey or Dark Brown

**The Sportsman** (Shown Above Right)  
 • Polarized Lens Options: Dark Grey or Dark Brown **\$ 89.00**  
 • Sightmaster Yellow **\$ 99.00**  
 • Photochromic Polarized Lens Options: Grey or Brown **\$ 99.00**

**The Sidekick** (Not pictured, similar to Sportsman) **\$ 73.00**  
 • Frame Colors: Matte Black or Brown • Polarized Triacetate Lens Options: Brown or Grey



**Window Decal's** Small @ \$1.50, Medium @ \$10.00, Large @ \$20.00  
 • High quality pressure sensitive reflective decal's with Bass Cat logo  
 • Colors: White letters with red trim or red letters with white trim  
 • Large decal has tag line...Total Performance Bass Boats • Sizes: Small (4 1/4" x 1"), Medium (19" x 4 1/2"), Large (27" x 6")





**Denim Shirt** (Seasonal Item...Call for Availability) **\$ 39.95**  
 • 100% Cotton Denim • Two front flapped pockets • Colors: Blue Denim • Sizes: S, M, L, XL, 2XL

**Pro Shirt** - Avail. in Short Sleeves @ \$ 30.95, or Long Sleeves **\$ 34.95**  
 • 65% Polyester/35% Cotton • Button down front • Epaulet's on shoulders • Colors: White, Khaki, Red, Teal, Olive • Sizes: S, M, L, XL, 2XL • *Specify short or long sleeve when ordering*

\* Note: Embroidery on collars (Fish Logo and Bass Cat Boats) is offered at an additional charge of \$ 5.00, and back embroidered logos are \$10.00 per shirt... Please Specify when ordering. Shirts may vary slightly from photo's.



**Ventura Shirt** (Shown Above Left) **\$ 29.95**  
 • Full-cut armholes • Sleeve welts • Stylish placket with collar • Woodtone buttons • Vented Rugby tail and smooth top stitching • 100% Combed Cotton Interlock Knit Fabric • Colors: Navy, Red, Royal, Black, Cranberry, Forest Green, White, Tan, Grey and Jade • Sizes: S, M, L, XL, 2XL, 3XL

**Topaz Shirt** (Shown Above Right) **\$ 36.95**  
 • Three button placket • Pearlized buttons • Double needle top stitched seams • Vented long back Rugby tail • 100% heavyweight cotton pique-stitch knit • Colors: Navy or Black with contrasting trim • Sizes: S, M, L, XL, 2XL



**Screen Printed Caps** **\$ 4.00**  
 • Foam front, mesh sides • One size fits all • Colors: Black, Navy, Grey, White, Maroon, Red,

**To Order Please Call\***

**Bass Cat Boats • (501) 481-5195**  
 \* Office Hours: 8:00 a.m. - 4:30 P.M. (CST)  
 Monday thru Friday

\* All Items Subject to Availability, and Price Change.  
 Please Allow 4-6 Weeks for Delivery.  
 MasterCard and VISA Accepted



**Tee Shirts** White @ **\$ 8.00** Black @ **\$ 12.00**  
 • 100% Cotton • Four color screen imprint on front • Colors: White or Black • Sizes: S, M, L, XL, 2XL

**White Fishin' Hand Towel** **\$ 4.00**  
 • 12" x 24" with brass eyelet, and belt loop clip • Silk screened logo



**Bass Cat Embroidered Caps** (One Size Fits All) **\$ 6.50**  
 • Polyester/cotton poplin • Color matched bolo cord • Adjustable tab • Embroidered Bass Cat logo • Colors: Black, Navy, Red, Maroon, Grey, White, Tan, Hunter Green, Royal Blue, Neon Teal, Neon Green, Neon Orange, and Neon Yellow



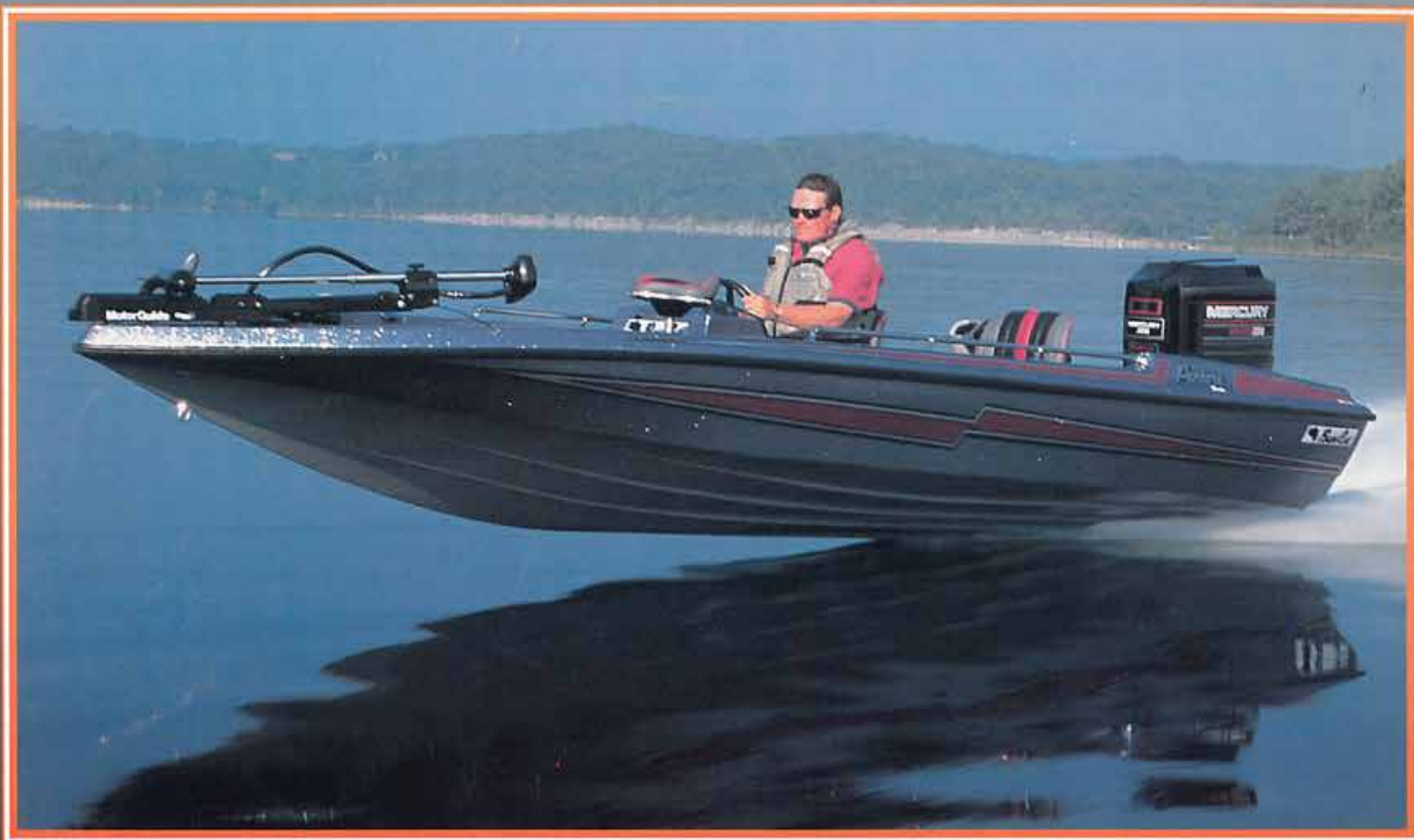
**Custom Embroidered Twill Caps** (Above Left) **\$ 9.50**  
 • 100% cotton material • Adjustable strap • Colors: Jade/Black, Dusty Rose/Charcoal, Black/Charcoal

**Camouflage Embroidered Caps** (Above Right) Brown or Green **\$ 8.50**



**License Plate** **\$ 4.00**  
 • Brushed Aluminum with Bass Cat logo





We're proud... Bass Cat Boats are well represented on the B.A.S.S. Tournament Trail. You will find quite a few "Cat's" in the entry field at each tournament. We're proud these professionals rely on our products to lead their way in the great sport of fishing.



**Total Performance Bass Boats**

P.O. Drawer 1360 • Mountain Home, Arkansas • (501) 481-5135